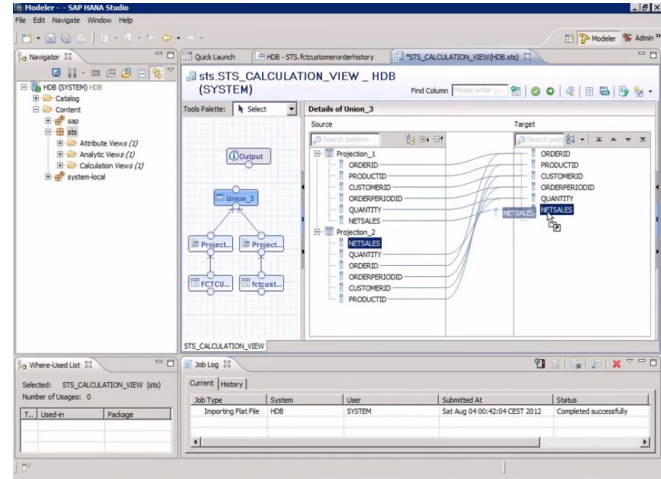


SAP HANA is an in-memory platform that runs analytics applications smarter, business processes faster, and data infrastructures simpler.

What does SAP HANA allow you to do:

- Allows connecting to data whatever the data source (SAP HANA is data agnostic)
- Integrates a number of SAP components and replication systems
- Optimized data transfer
- Provides results near real time
- Complex system landscapes can be resolved
- Combines row based and column based technology

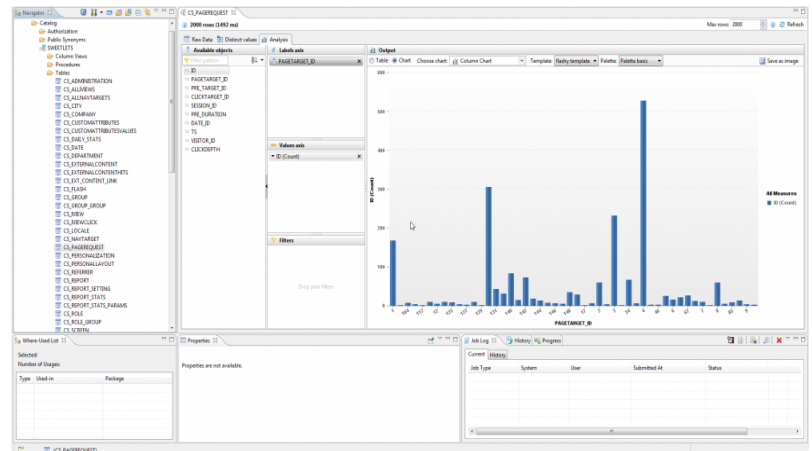


What are the user benefits of SAP HANA

- Code is applied to data, instead of data pulled out for code
- Multidimensional modelling with supporting join/calculation engines
- Models can be consumed by SAP BI Tools
- CE Script language empowers user to write simpler code with higher functions
- Geospatial data, Text analytics, Predictive analytics

What are the IT benefits of SAP HANA

- In Memory DB enabling 3600X faster reporting speed
- 2 tier architecture. No need for application server
- Parallel processing due to Multicore Processor
- 6.3 X Data compression due to column store
- Inserts only on delta data
- Optimized SAP ABAP Code



Industries served:

Equipment and Component Manufacturing
 FMCG and Non- Durable Goods Distribution
 Retail & E-Commerce
 Professional Services
 Agro & Food Processing Industries

Why Choose Us:

12+ Years of experience
 200+ Customers in the SME Sector in India
 Dedicated Helpdesk for Support
 Business Transformation Consulting- Transform from an individual-

Affordable Business Solutions Pvt. Ltd.

565/E, 7th Main Road
 HAL 2nd Stage, Indiranagar
 Bengaluru 560 038
 Phone: +91 80 4245 7457
 E-mail: absbaadal@abs.in
 Website: www.abs.in/abs-baadal/business_intelligence

